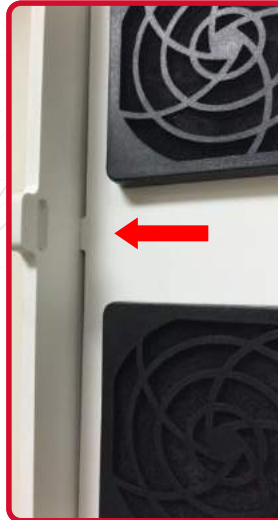


**STEP ONE:**

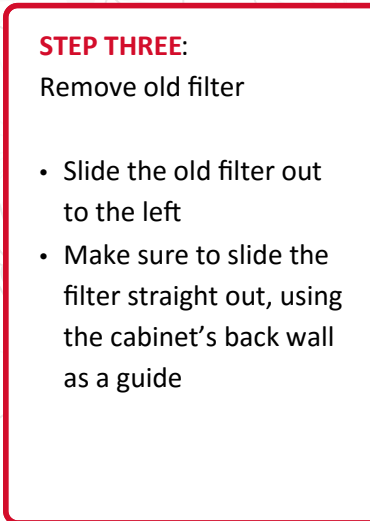
Prepare

- Turn HEPA fan off
- Unplug cart/cabinet*

**STEP TWO:**

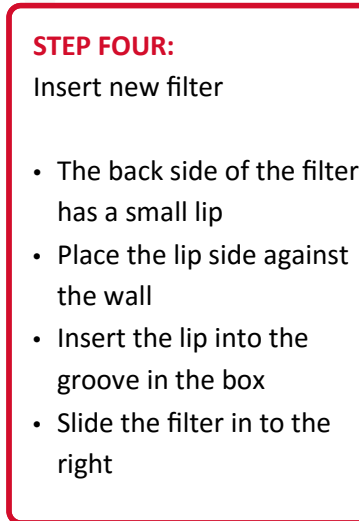
Remove cover

- Cover is on the left side
- Gently push cover to the left in order to clear the latch (see red arrow)
- At the same time, pull the cover toward you
- Remove cover completely

**STEP THREE:**

Remove old filter

- Slide the old filter out to the left
- Make sure to slide the filter straight out, using the cabinet's back wall as a guide

**STEP FOUR:**

Insert new filter

- The back side of the filter has a small lip
- Place the lip side against the wall
- Insert the lip into the groove in the box
- Slide the filter in to the right

**STEP FIVE:**

Replace cover

- Place the cover into the grooves at the top and bottom of the box
- Slide straight back until the cover touches the wall
- Make sure the latch goes into the notch on the cover (see step two for image)

**STEP SIX:**

Finishing touches

- Plug cabinet/cart back into electrical outlet
- Turn fan back on
- HEPA filters should be changed every six months.
- New filters (MU-V06) can be ordered from MASS™ Medical Storage.
- Direct any questions to our service department at 800-593-1900

* All MASS™ products utilize standard 110v/15amp circuits.

Changing HEPA filters - Version 1.2